

G5

Tapeless Fittings



G5 Tapeless Fittings Installation & Operation Instructions

Manufacturing Contact Information

A+ Corporation, LLC *Call for expert product application assistance:*
41041 Black Bayou Rd. Phone: (225)-644-5255 Website: www.geniefilters.com
Gonzales, LA 70737 Fax: (225)-644-3975 E-mail: sales@geniefilters.com

Safety Warnings

- ⚠ Failure to abide by any of the safety warnings below may result in equipment failure and serious injury or death.
 - ▶ Valve off flow to where connection will be made prior to fitting installation
 - ▶ Do not exceed any equipment pressure ratings

Tools Required

- ▶ 3/4" or 19 mm open end wrench
- ▶ Thread sealant



An ISO 9001:2000 certified company



©2010 A+ Corporation, LLC. All rights reserved.

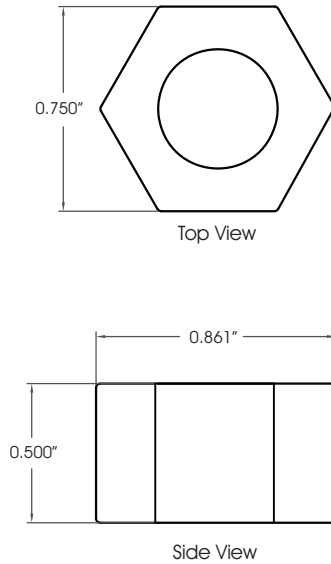
SCC-FT-G5-InsInstallationOperation_0210

Tech Specs

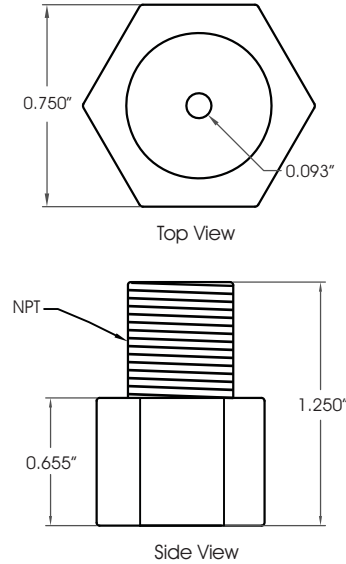
Maximum pressure rating	3,500 psig
Maximum temperature	235 °F (113 °C) (with Neoprene seals)
Wetted materials	Machined parts: 316 stainless steel / NACE compliant All other metal parts: stainless steel / NACE compliant Sealing material: Neoprene standard

Dimensions

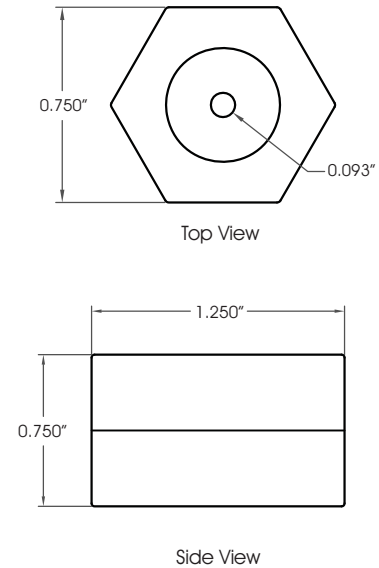
Female Cap



Female Adapter



Female Coupling



Installation Instructions

Step 1. Valve off flow

- ▶ Valve off the flow to where connection will be made prior to fitting installation.

Step 2. Remove existing thread sealant

- ▶ Remove any Teflon tape or sealing material from the male NPT threads of the connection on which the G Fitting™ will be installed.

Step 3. Install G Fitting™

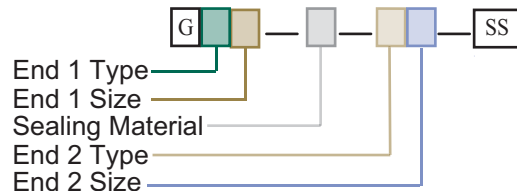
- ▶ Female G fittings do not require additional sealing material. Screw the female G Fitting™ onto the desired male NPT fitting until hand tight. The G Fitting™ will seal up to its maximum pressure rating of 3500 PSIG with hand tight engagement. Additional torque beyond hand tight is not necessary, and will not increase the amount of pressure the fitting can contain.
- ▶ The male NPT end of the G5™ Female Adapter will require thread sealant and should be properly installed in the desired female NPT fitting using a 3/4" or 19mm open end wrench.

Model Numbering & Additional Part Numbers

Your model number is determined by your specific needs. Choose options below.

End 1 Type	F = Female
End 1 Size	4 = 1/4 (other sizes available upon request)
Sealing Material	0 = Viton® 1 = Kalrez® 7 = Neoprene (other materials available upon request)
End 2 Type	MN = Male NPT CP = Cap GF = G Female
End 2 Size	4 = 1/4 (other sizes available upon request)

How to build the model number:



- ⚠ We cannot recommend specific sealing materials due to the complex nature of sample stream compositions. Temperature and pressure also may be factors.
- ⚠ Unless specified otherwise, the product will ship with our standard sealing materials and materials of construction stated in the technical specifications section of the corresponding Product Sheet. 🌱 Please refer to www.dupontelastomers.com for sealing material recommendations and advice. It is the user's responsibility to specify the sealing materials and other materials of construction for their application.